

MIOSHA OVERVIEW & UPDATE

PRESENTED TO
AMERICAN SUBCONTRACTORS
ASSOCIATION OF MICHIGAN

Jim Getting, Phd, CSP
Senior Construction Safety Consultant
MIOSHA Consultation, Education, & Training Division
Gettingj@michigan.gov



OVERVIEW

- Looking Back at 50
- MIOSHA Update
- MIOSHA COVID Response
- Leveraging the ASAM / MIOSHA Alliance

OSHA TURNS 50

<https://www.youtube.com/watch?v=ny9PMJxm5jk>

MIOSHA's Mission

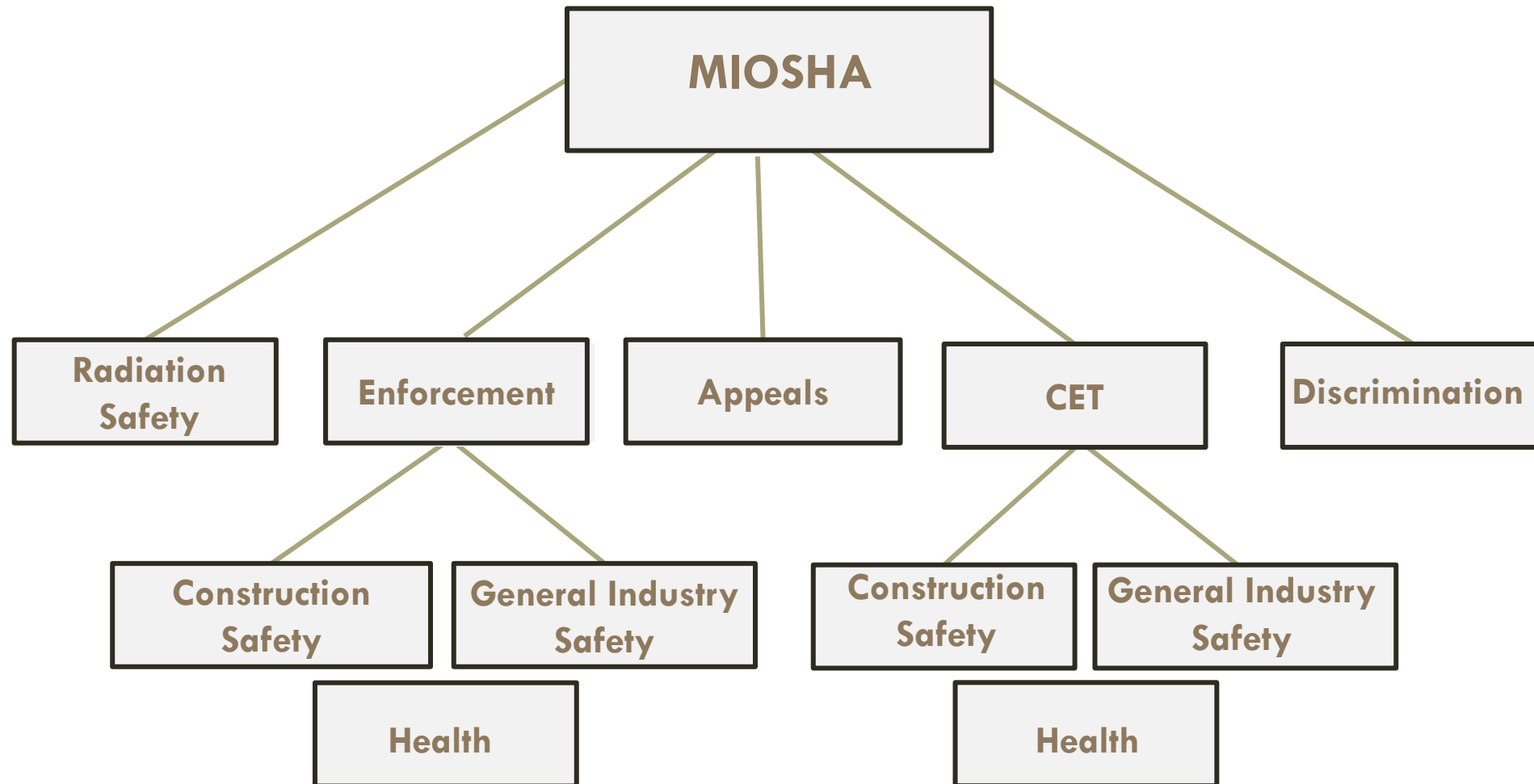
Help protect the safety and health of Michigan workers!

MIOSHA's Motto

Educate before we Regulate!



Michigan Occupational Safety and Health Administration



MIOSHA STRATEGIC PLAN FY 2019 - 2023

Goal 1: Reduce exposures, injuries, illnesses, fatalities.

Goal 2: Promote benefits of positive safety culture.

Goal 3: Strengthen public confidence in MIOSHA.



MIOSHA STRATEGIC PLAN 2019 – 2023

2021 STATUS



Goal 1.1 Reduce injuries & illnesses in High-Hazard Industries (Currently 8)

Goals met in five of the eight industries:

- ☐ Primary Metal Manufacturing (331)
- ☐ Fabricated Metal Product Manufacturing (332)
- ☐ Machinery Manufacturing (333)
- ☐ Transportation Equipment Manufacturing (336)
- ☐ Support Activities for Transportation (488)



Did not meet goals in three of eight industries:

- ☐ Wood Product Manufacturing
- ☐ Hospitals*
- ☐ Nursing and Residential Care Facilities*

***Rise due to COVID-19**



MIOSHA STRATEGIC PLAN 2019 – 2023

2021 STATUS

Goal 1.2 Reduce General Industry Fatalities

Goal not met due to drastic increase in COVID-19 fatalities

Goal 1.3 Reduce DART rate for Construction

Goal was 1% decrease per year – **Achieved 12% decrease!**

Goal 1.4 Decrease Construction Fatality Rate

Goal was 3% decrease – **Achieved 5% decrease!**



MIOSHA STRATEGIC PLAN 2019 – 2023

2021 STATUS

Goal 2.1 Evaluate Safety and Health Programs During 100% of Comprehensive Consultative Visits – **Goal Met**

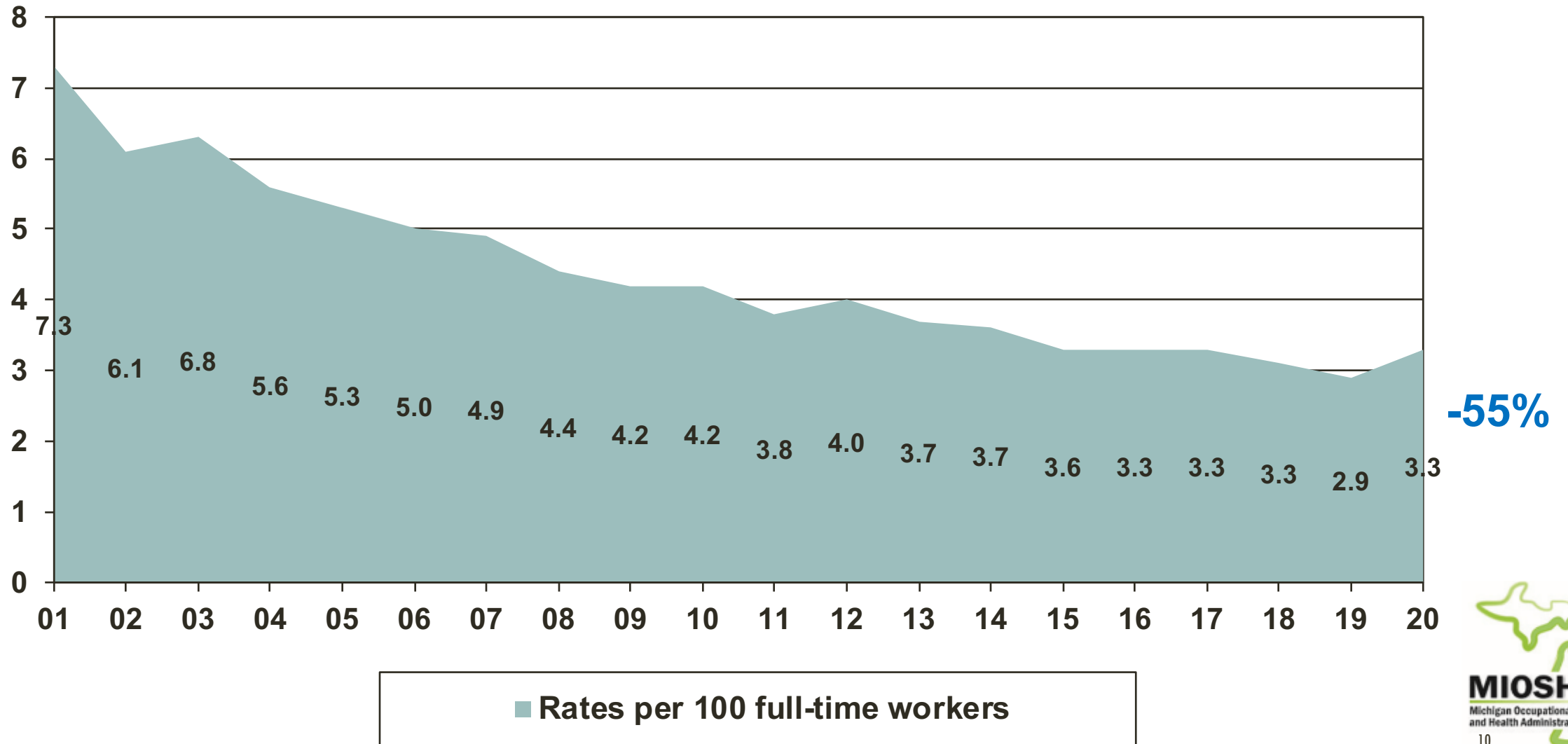
Goal 2.2 Increase Participation in MIOSHA Training Institute Courses
Goal not met – Goal was 2,256 trainees, result was 1,161 trainees

Goal 2.3 Increase Participation in Cooperative Programs
Goal met for MVPP's, Alliances, and Partnerships
Goal not met for MSHARP Renewals, CET Awards, and MCP

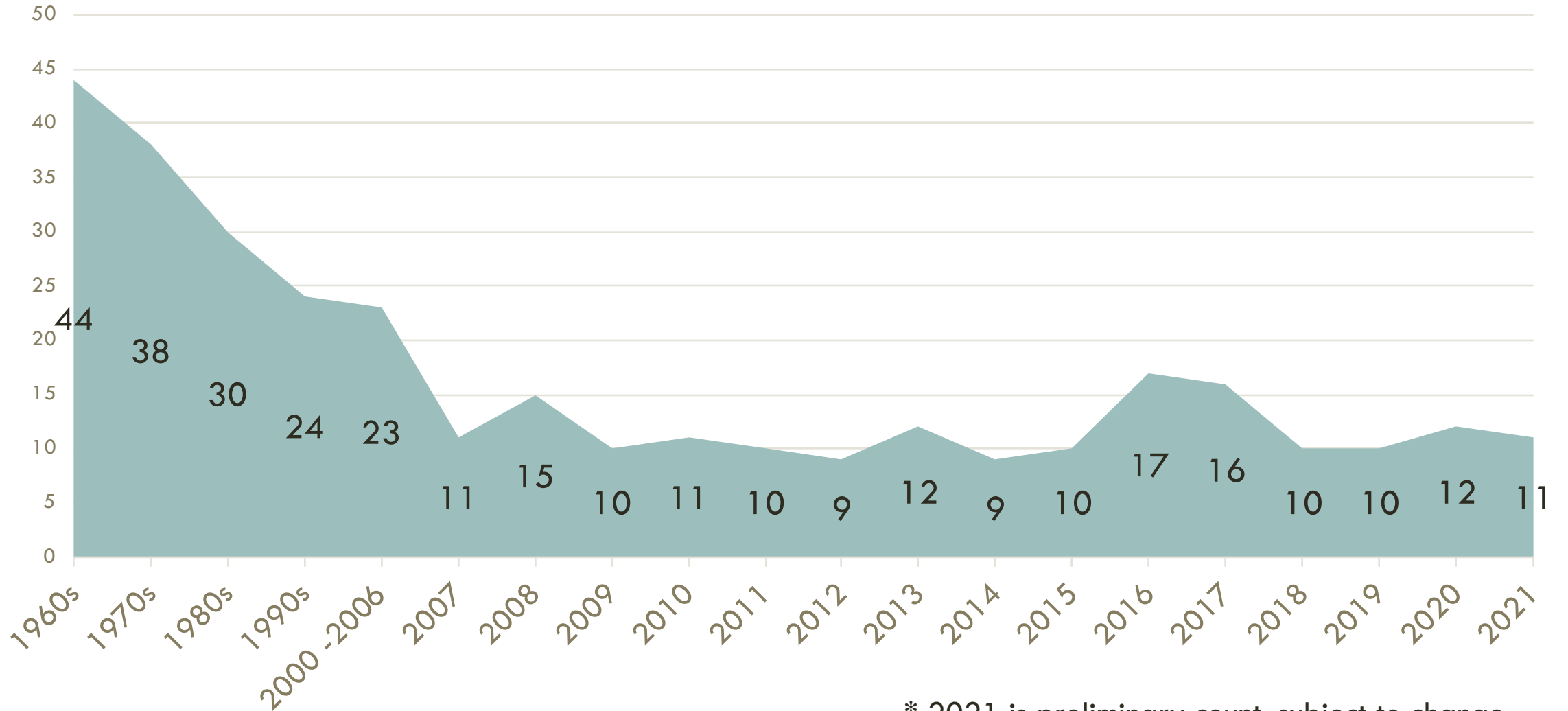
Goal 2.4 Connect MIOSHA to Industry
MIOSHA News and eNews, Take a Stand Day, GovDelivery, Coffee with MIOSHA, Facebook, Twitter, YouTube



MICHIGAN INJURY & ILLNESS RATES PRIVATE SECTOR (U.S. BLS DATA)



MICHIGAN FATALITIES IN CONSTRUCTION



* 2021 is preliminary count, subject to change

■ Fatalities

2021 MIOSHA CONSTRUCTION FATALITY PRELIMINARY INFORMATION



Total Fatalities

- ☐ 5 Struck By/Crushed by
- ☐ 4 Electrocution
- ☐ 2 Fall
- 11 Total**



MICHIGAN INJURY & ILLNESS RATES GENERAL INDUSTRY VS CONSTRUCTION

Industry ²	NAICS Code ³	Total recordable cases	DART cases
All Ownerships Combined ⁵		3.3	2.2
Construction		1.7	1.1
Construction	23	1.7	1.1
Construction of buildings	236	1.2	0.8
Residential building construction	2361	1.5	1.3
Nonresidential building construction	2362	1.0	0.5
Heavy and civil engineering construction	237	1.6	0.8
Specialty trade contractors	238	1.9	1.3
Foundation, structure, & building exterior contractors	2381	3.4	2.4

MIOSHA 2021 ACTIVITIES

☐ Enforcement:

- ☐ 3,357 Onsite Inspections
 - 52% Construction
 - 48% General Industry

☐ Consultation:

- ☐ 2,271 consultations
- ☐ 180 hazard surveys
- ☐ 300 on-site visits

MIOSHA FY 2020 ACTIVITIES

Top 10 Standards Cited (Not including OTS)

	Standard Cited	Times Cited	# of Instances	Initial Penalties
→	CS Part 45, Fall Protection	401	644	\$610,800
	OH Part 602, Asbestos Standards for Construction	384	433	\$301,100
→	CS Part 6, Personal Protective Equipment	280	360	\$249,160
→	CS Part 12, Scaffolds and Scaffold Platforms	206	232	\$165,300
	GI Part 85, The Control of Hazardous Energy Sources (Lockout/Tagout)	204	302	\$643,400
→	CS Part 11, Fixed and Portable Ladders	160	195	\$139,300
	GI Part 33, Personal Protective Equipment	132	145	\$193,600
→	CS Part 42, GI 92, and OH 430, Hazard Communication	123	159	\$162,770
	GI Part 1, General Provisions	123	177	\$427,300
	GI Part 2, Walking-Working Surfaces	112	145	\$248,000



MIOSHA COVID-19 RESPONSE

MIOSHA took a collaborative approach to COVID-19 workplace safety.

- ☐ **E**xtensive education and outreach programs to provide employers the resources they need to understand and implement necessary precautions.
- ☐ **C**lear and consistent enforcement to keep workers safe.



COVID EDUCATION OUTREACH AND ASSISTANCE

Covid Hotline: 855 723-3219

- Developed a one-stop online resource:
Michigan.gov/COVIDWorkplaceSafety for all workplaces
- Launched the MIOSHA COVID-19 hotline: **855-SAFE-C19**.
Over 16,000 calls. Average wait time of less than 20 seconds.
- Created the MIOSHA COVID-19 **Ambassador Program** educated and **consulted over 5,500+** establishments
- Conducted **townhalls and webinars** with employers, workers and stakeholders.
- **Provided Covid Safety Grants** to protect employees in 1,500+ Michigan workplaces
Round one \$6.55M
Round two \$2M (just completed).

15,415

**TOTAL NUMBER OF COMPLAINTS AND REFERRALS
PROCESSED IN FISCAL YEARS 2015-2019 **COMBINED****

16,871

**TOTAL NUMBER OF COMPLAINTS AND REFERRALS
PROCESSED SINCE MARCH 2020.***

*THE EXACT NUMBER OF COMPLAINTS THAT WERE COVID-19 RELATED VS. “NORMAL” IS UNKNOWN BUT OUR
ESTIMATE IS ABOUT **85%** WERE COVID-RELATED.

COMPLAINTS & REFERRALS

Consultation Education and Training (CET) Division

Established in 1967

(Federal OSHA-1970; Modern MIOSHA-1975)

Funded through Special CET Fund and Matching Federal Dollars.

8 Construction Safety Consultants



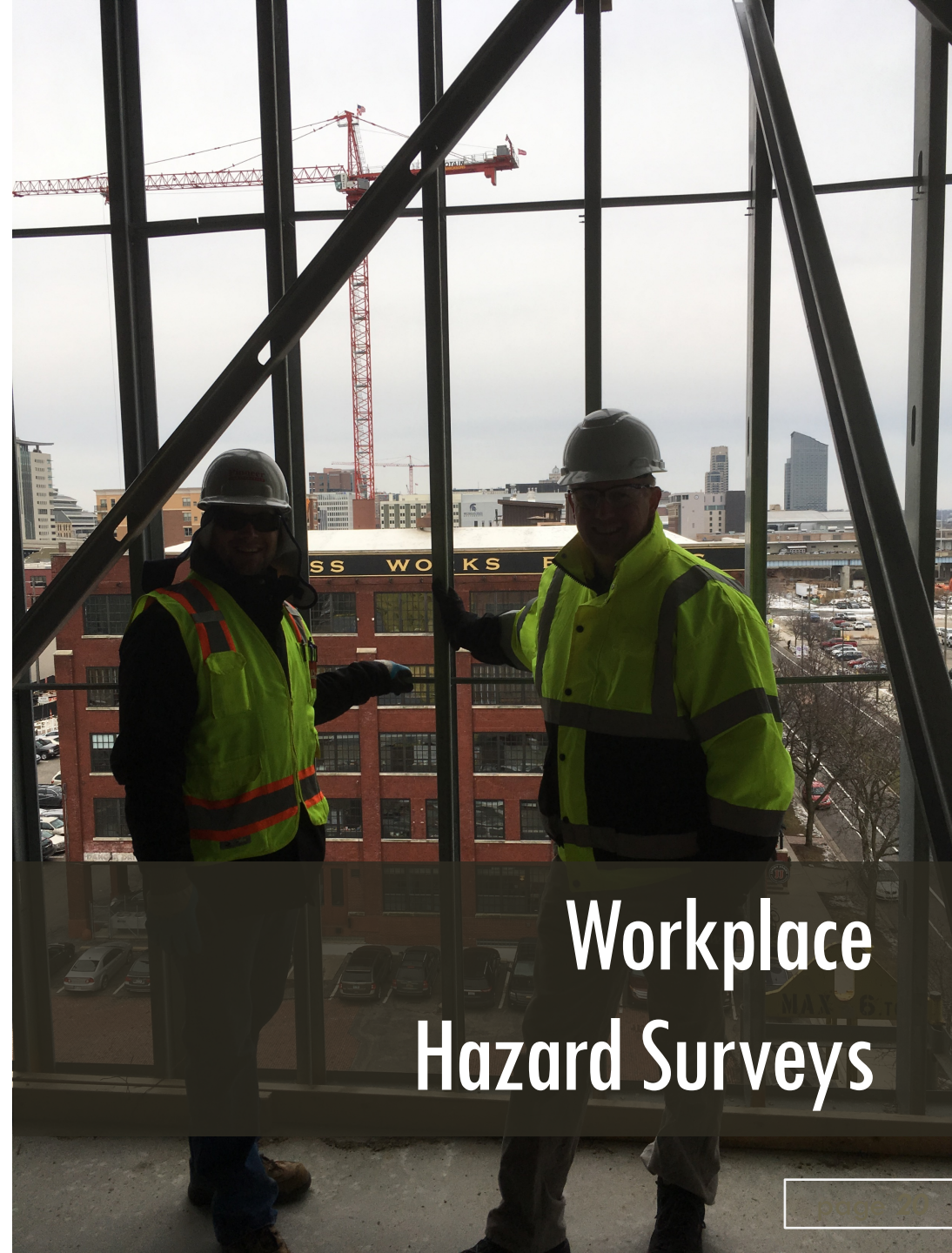
WHAT CAN WE DO FOR YOU?

Mock inspection at your site by safety or health consultant.

Seeks to find hazards / potential violations.

Opportunity for workers to ask MIOSHA questions

Written report issued to assist in identifying MIOSHA violations.



Workplace
Hazard Surveys

WHAT CAN WE DO FOR YOU?

At your office, shop, trailer, jobsite,
whatever!

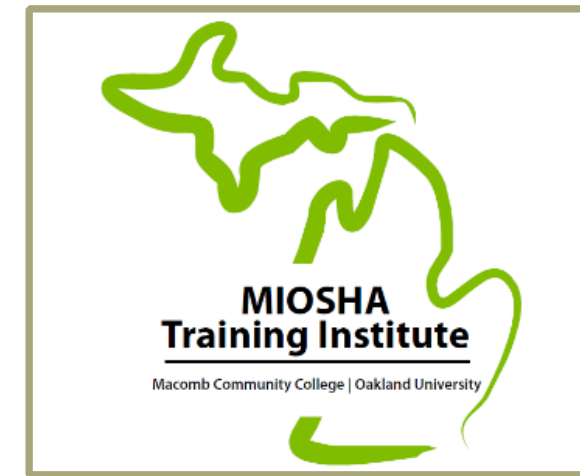
You name the topic.

Length can be brief or several hours.



MIOSHA Training Institute

- 162 classes
- 2409 participants (29,938 Overall)
- 152 certificates awarded
- 2nd online course, Part 1 –General Provisions
- \$32,280 Awarded for MTI Scholarships in FY 2019



Level 1 Boot Camp MCC 2019




Premier Provider of
High-Quality Workplace
Safety and Health Training

MIOSHA Training Institute (MTI)
2020 Spring and Summer Schedule




2020 MIOSHA Training Institute (MTI) Schedule
Registration and course information available at:
www.michigan.gov/mioshatraining

Certificate: General Industry (GI); Construction (C); Management (M); Occupational Health (H)	
February 2020	March 2020 Cont.
4 Scaffolds and Scaffold Platforms – Holland (C)	24 Excavations: The Grave Danger – Midland (C)
4-5 MIOHSA Construction 10-Hour Course – Clinton Township (C)	25 Industrial Robotic Safety – Warren (GI)
11 Supervisor's Role in Safety and Health – Muskegon (GI, C)	25 Confined Spaces in Construction and Permit-Required Confined Spaces in General Industry – Lansing (C, GI, H)
11-12 MIOHSA Construction 10-Hour Course – Lansing (C)	26 Behavior-Based Safety: Fundamentals and Implementation – Traverse City (M)
18 MIOHSA Construction – Part 45 Fall Protection – Marquette (C)	31 Understanding and Improving Your Safety Culture – Bloomfield Hills (M)
19 Incident Investigation – Muskegon (M)	31-Apr 1 MIOHSA Construction 10-Hour Course – Marquette (C)
20 Asbestos and Lead Awareness – Holland (C)	
25 General Provisions – Grand Rapids (GI)	April 2020
25 Scaffolds and Scaffold Platforms – Saginaw (C)	8 Hazard Communication and Right-to-Know Requirements for General Industry and Construction – Detroit (GI, C, H)
25-26 MIOHSA Construction 10-Hour Course – Alpena (C)	9 Guards for Power Transmission – Lansing (GI)
26 Walking-Working Surfaces – Clinton Township (GI)	14 Machine Guarding and Hazard Identification – Cadillac (GI)
26 Respiratory Protection – Jackson (GI, C, H)	15 Effective Safety and Health Training – Traverse City (M)
26 Supervisor's Role in Safety and Health – Bloomfield Hills (GI, C)	15 Respiratory Protection – Alpena (GI, C, H)
27 MIOHSA Construction – Part 45 Fall Protection – Traverse City (C)	15 Aerial Work Platforms – Detroit (C)
March 2020	15 MIOHSA Construction – Part 45 Fall Protection – Midland (C)
3 MIOHSA Recordkeeping and Cost of Injuries – Niles (C, M)	22 Scaffolds and Scaffold Platforms – Ann Arbor (C)
3-5 Level Two Certificate Safety and Health Management System Boot Camp – Lansing (M)	23 Health Hazards in Construction – Ann Arbor (C)
4 Cranes and Derricks – Lansing (C)	28 Machine Guarding and Hazard Identification – Holland (GI)
4 General Provisions – Escanaba (GI)	28 Behavior-Based Safety: Fundamentals and Implementation – Bloomfield Hills (M)
5 Excavations: The Grave Danger – Grand Rapids (C)	29 Understanding and Improving Your Safety Culture – Alpena (M)
10 Powered Industrial Trucks: What Every Trainer and Operator Must Know – University Center (GI)	29 General Provisions – Clinton Township (GI)
11 Occupational Noise Exposure – Howell (GI, H)	29-30 MIOHSA Construction 10-Hour Course – Holland (C)
17-18 Electrical Standards for General Industry and Construction – Grand Haven (GI, C)	30 Excavations: The Grave Danger – Escanaba (C)
19 Asbestos and Lead Awareness – Ann Arbor (C)	
19 Health Hazards in Construction – Holland (C)	

When MIOHSA Enforcement Visits
You can take this course at your convenience from office or home. No travel is required.
For more information, see the MTI Training Calendar at www.michigan.gov/mioshatraining.

While every effort has been made to ensure the accuracy of this information, it is subject to change without notice. The most current information about class additions, changes and cancellations is available on our MTI Training Calendar.

 continued on reverse side ▶

ONLINE STREAMING TRAINING

Caught in/Between Hazards - M276E (15 mins)

MARCOM's Video On Demand (VOD) program on Caught-In/Between Hazards in Construction Environments provides the information employees need to recognize

PURCHASE DVD

Full Video

Preview

Online Exam (LMS)

Printable Exam (VOD)



Email wanamakerk@michigan.gov for the login and password information

MIOSHA: STAY CONNECTED!



MIOSHA News – available online quarterly



MIOSHA eNews – sent via email monthly



MIOSHA GovDelivery E-mails



Sign-up on MIOSHA website:
www.michigan.gov/miosha

MIOSHA WORKPLACE IMPROVEMENTS TO SAFETY AND HEALTH (MIWISH) GRANTS

- ❑ Matching reimbursement grant for the purchase of safety and health equipment and training
- ❑ Small employers (<250 employees) in high hazard industries
- ❑ \$250,000 per year



ASAM / MIOSHA ALLIANCE

Partners since 2017

Working together for improved safety

ASAM Safety Committee meetings

ASAM site visits

MIOSHA is committed to meet ASAM members needs

Better together!

CONTACT MIOSHA

Michigan Occupational Safety and Health Administration (MIOSHA)

530 W. Allegan Street, P.O. Box 30643

Lansing, Michigan 48909-8143

If you need further information regarding COVID-19

Call 855-SAFEC19 (855-723-3219).

To request consultation, education and training services, call 517-284-7720

or visit our website at:

www.michigan.gov/miosha

